



How to retrofit your ALTurbine with the Hub Quick Connect

Your ALTurbine nacelle can easily be retrofitted with the new Hub Quick Connect!

Included in this upgrade pack are:

- Hub Quick Connect with hexagonal driveshaft
- 3 new Hex Locks (with larger hole for new driveshaft)
- Larger wooden spool

You'll also need to find:

- some work gloves
- a drill (a drill press is ideal, but a hand-held drill will be sufficient)
- a 3/16" drill bit

1. Bend the driveshaft to create a handle, firmly grasp the hub, and wiggle and pull the shaft out of the hub. Wear work gloves, both for safety and for a better grip.

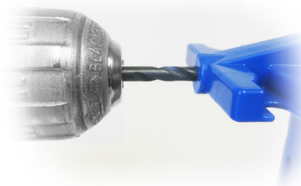


Bend the shaft.

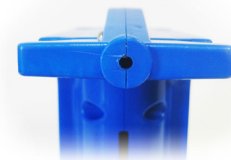


Wiggle and pull out.

2. Next, drill out your nacelle with a 3/16" bit. Whether you use a drill press or a hand-held drill, wear work gloves and hold the nacelle firmly in place. Drill through the existing shaft hole, making sure to go more than half-way through. Turn the nacelle around and drill through the other end of the shaft hole.



Drill through shaft hole.



Before: smaller hole



After: 3/16" hole

3. Once the shaft hole is drilled, slide the Hub Quick Connect driveshaft through the nacelle and mount the new Hex Lock on the other end of the driveshaft. Your green hub will fit right into the Hub Quick Connect and your new spool can be mounted using the Hex Locks.



Your green hub will fit the Hub Quick Connect. Use the new Hex Locks to mount the larger wooden spool.